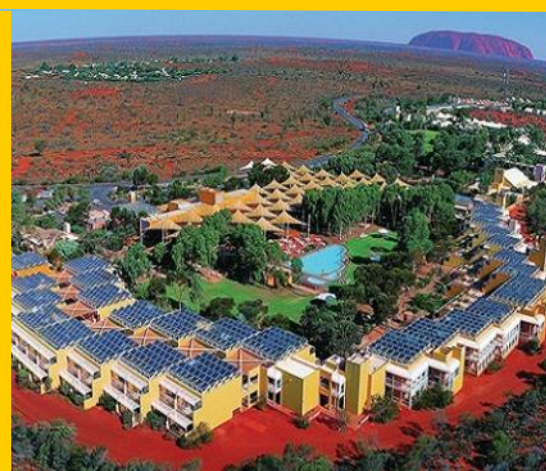


SPONSORSHIP PROSPECTUS



ACP 2016 ULURU
3 - 6 JULY 2016
AYERS ROCK RESORT
NORTHERN TERRITORY, AUSTRALIA



INVITATION

Dear Colleagues and Friends,

On behalf of the Organising Committee it is my great privilege and pleasure to invite you to Uluru in the Northern Territory, for the 18th Annual Scientific Meeting (ASM) of the Australasian College of Phlebology (ACP).

The ASM includes keynote lectures, original papers, panel discussions and the popular 'Controversies in Phlebology' key-pad interactive debates.

As past delegates have come to expect the ASM will offer a great social program including the Welcome Reception and the Conferring Ceremony and Gala Dinner.

I look forward to your participation in the Annual Scientific Meeting and seeing you all in Uluru.

Kurosh Parsi
Convenor
Australasian College of Phlebology



LOCATION

Ancient rock formations soar hundreds of metres into the desert sky, surrounded by the Red Centre's unique wildlife and spirit of the Anangu people's Tjukurpa. Uluru-Kata Tjuta National Park expands across more than 327,414 acres of Australia's desert outback and is home to two of the world's most iconic rock formations.

Sunset and sunrise over Uluru and Kata Tjuta are spectacular, with the colours at both sites becoming more vibrant and even changing. Uluru and Kata Tjuta have significant meaning to Aboriginal people. They both form an important focus of their spiritual life.

Uluru-Kata Tjuta National Park is Aboriginal land. The park is jointly managed by its Anangu traditional owners and Parks Australia. The park is recognised by UNESCO as a World Heritage Area for both its natural and cultural values.

GETTING THERE

By Air

Both Jetstar and Virgin Australia fly daily directly into Ayers Rock Airport from Sydney. Jetstar has a 4 weekly return service from Melbourne Tullamarine to Ayers Rock Airport (Tuesday, Wednesday, Friday and Sunday). Qantas operates daily flights to Ayers Rock Airport via Alice Springs from Sydney. Qantas also offers direct flights from Cairns and Alice Springs.

All three airlines offer connecting flights from most capital cities to Ayers Rock Airport. International guests may like to consider a Qantas Aussie AirPass for a more convenient way to include Ayers Rock (Uluru) in their itinerary.

Alice Springs to Ayers Rock Resort is a 1 hour flight or a 4.5 hour drive (450kms). Contact the Voyages Travel Centre for accommodation, flight, touring, car hire and travel insurance quotes on 1300 134 044 (+612 8296 8010) or email travel@voyages.com.au.

Airport Transfers

Complimentary return coach transfers from Ayers Rock Airport to Voyages Ayers Rock Resort meet every scheduled flight. Ayers Rock Airport is conveniently located just six kilometres from Voyages Ayers Rock Resort (10 minutes travel).

WEATHER

Uluru is situated near the centre of a semi-arid desert, which most people would associate with a hot and dry climate. However, it surprises - in that the temperature can vary so dramatically. Desert climate, average temperatures range from approximately 22 degrees Celsius (72 degrees Fahrenheit) in winter to 35 degrees Celsius (95 degrees Fahrenheit) in summer. Daytime temperatures during summer can exceed 40 degrees Celsius (104 degrees Fahrenheit). Guests should ensure they pack sunscreen and a hat.

VENUE

ULURU MEETING PLACE

The Uluru-Kata Tjuta National Park is an awe-inspiring living cultural landscape. The grandeur and unrefined charm of this iconic Australian destination is celebrated in Ayers Rock Resort's advanced, purposed built conference centre.

At Uluru Meeting Place event practicalities are delivered in modern luxury from a location of extraordinary wonder.

AYERS ROCK RESORT

Regardless of where you stay while you're at Voyages Ayers Rock Resort, from the sanctuary of one of the four hotels, or the great outdoors and open spaces of Voyages Ayers Rock Resort Campground, you can experience the beauty of the living cultural landscape of Uluru-Kata Tjuta National Park, in Australia's Northern Territory.

With over 65 tours, local activities and attractions within the Resort and the Uluru (Ayers Rock) - Kata Tjuta (The Olgas) National Park, your days will be action-packed. Ride a camel across the desert dunes. Hop on a Harley, or embark on a base walk of Uluru (Ayers Rock).

If you're looking for relaxation and pampering after a day of discovering the outback, make sure you visit the beautiful Red Ochre Spa. The Red Ochre Spa has been designed with total indulgence in mind - a sanctuary where guests exchange stressed states for tranquillity. The Red Ochre Spa is located within Sails in the Desert Hotel, at Ayers Rock Resort.

By night, dine under a canopy of stars at the award-winning Sounds of Silence buffet barbeque dining experience. See the sun set behind Uluru, and after dinner, tour the southern night sky with a resident startalker.

Ayers Rock Resort provides a variety of accommodation options for every possible taste and budget - from the award winning 5-star Sails in the Desert, and modern Desert Gardens Hotel, to the self contained Emu Walk Apartments, the authentic Outback Pioneer Hotel and Lodge, and the Ayers Rock Campground, offering powered campsites and air conditioned cabins.

ACCOMMODATION

Voyages Ayers Rock Resort offers 691 rooms across a range of accommodation styles including:

Longitude 131 15 Luxury Tents

Sails in the Desert 232 Rooms

Desert Gardens Hotel 218 Rooms

SPEAKERS

KEYNOTE SPEAKERS



Afsaneh Alavi (Canada)
Phlebologist and Dermatologist

Dr. Alavi is currently the director of the wound healing fellowship at University of Toronto-Women's College Hospital. She serves on the editorial boards for a number of journals in wound healing and dermatology. She is a board member and president elect of the Canadian Association of Wound Care.



Pier Luigi Antignani (Italy)
Phlebologist and Vascular Physician
General Secretary, UIP

Professor of Angiology, as well as Director of Vascular Centre in Nuova Villa Claudia, Rome, Italy. He is President of Italian Society for Vascular Investigation, Vice-President of IUA and General Secretary of UIP.



Louis Grondin (Canada)
Phlebologist

Echosclerotherapy and Ultrasound Cartography was performed for the first time in Canada at his clinic. He went on to pioneer the ultrasound guided catheter injection for difficult to reach varicose veins. Today, his technique is practiced worldwide.



Mark Meissner (USA)
Phlebologist and Vascular Surgeon
Vice President, UIP

Dr. Meissner is a UW professor of surgery specializing in vascular surgery, with particular clinical and research interests in deep venous thrombosis, chronic venous disease, vascular trauma and abdominal aortic aneurysms.



Angelo Scuderi (Brazil)
Phlebologist and Vascular Surgeon
President, UIP

Dr Scuderi trained in general surgery and specialised in Vascular Surgery. He is the author of many publications in Portuguese, Spanish, Italian and English about Phlebology. He is the president of the International Union of Phlebologie (UIP).



Dr. Greg Spitz (USA)
General and Vascular Surgeon

Dr. Spitz invented the TRIVEX System for varicose vein removal in 1996 and holds several patents in the field of vein surgery and other areas of medicine. He has travelled extensively teaching varicose vein surgery to physicians.

Sponsored By LeMaitre

SPONSORSHIP PACKAGES

SPONSOR LEVEL	DIAMOND	PLATINUM	SPEAKER
PRICE	\$30,000.00	\$25,000.00	\$15,000.00
Social Function Sponsor	Included	Choose 1	-
Speaker			Yes
Exhibition Stand	Platinum	Platinum	Premium
Email Marketing	6	4	2
Website Slider Logo	Yes	Yes	Yes
Satchel Inserts	2	2	1
Logo printed on ASM satchel	Yes	-	-
Logo displayed in print & web materials	Yes	Yes	Yes
Delegate List	Yes	Yes	Yes
Exhibition Stand in a preferred position	Yes	Yes	Yes
Ads in the ASM Handbook	Double Page or Two	Double Page or Two	Single Page
Complimentary registrations including social functions	6	4	3
Acknowledgment as an ASM Partner	Yes	Yes	Yes

SPONSORSHIP OPPORTUNITIES

A variety of sponsorship packages are being offered. We are more than happy to discuss alternative sponsorship options to fit in with your organisation's objectives and budget.

Please contact Zivka Nicholls to discuss Sponsorship and Exhibition opportunities on +61 2 9386 1811 or email acpasm@phlebology.com.au

WELCOME RECEPTION SPONSOR \$5,500.00

This event is the first opportunity for delegates to connect at the ASM. This is one of only few opportunities to address delegates at the ASM.

Inclusions

- Opportunity for company representative to briefly address guests (5 minutes)
- Pop-up banners displayed during the Welcome Reception (up to 4)
- Opportunity to distribute promo material during function
- 6 complimentary tickets to the Welcome Party
- Recognition as Welcome Party Sponsor on all print and website material
- 1 Full page advertisement in Conference Handbook
- Logo included on printed guest tickets

GALA DINNER SPONSOR \$6,600.00

This event is always a highlight for delegates. This is one of only few opportunities to address delegates at the ASM.

Inclusions

- Acknowledgement as the Gala Dinner Sponsor
- Opportunity for company representative to address guests (5 minutes)
- Pop-up banners displayed during the Gala Dinner (up to 4)
- 4 complimentary tickets to the Gala Dinner
- Recognition as Gala Dinner Sponsor on all print and website materials
- Discounted exhibition booth
- 1 full page advertisement in the Conference Handbook
- Logo included on printed guest tickets

SPONSORSHIP OPPORTUNITIES

ASM HANDBOOK \$2,200

Have your logo in view of all delegates at all times by displaying your logo on each page of the conference handbook.

Inclusions

- Advertisement on the inside front cover and inside back cover of ASM Handbook
- Logo displayed on each page of the ASM Handbook

ENTERTAINMENT SPONSOR

Our wonderful social program has always been entertaining and we offer the opportunity for sponsors to add their own flavour of entertainment which will be associated with their brand for the evening (although this will have to suit the theme of the evening) this year's Gala Dinner theme is 'Jungle Safari'. You simply have to cover the cost of the entertainment.

If there are ideas you may have to add an entertaining feature to the program we are more than happy to discuss this further to see if it would be suitable for the event. Please call us to discuss entertainment sponsorship further on +61 2 9386 1811.

SACHEL SPONSOR \$3,300

Have your logo seen by all delegates by having it printed on the front of the conference satchel.

Inclusions

- Company logo printed on front of conference satchel
- Satchel inserts

SPONSORSHIP OPPORTUNITIES

POCKET PROGRAM \$2,200

The Pocket Program is the guide to the ASM for all attendees, so your profile will be seen continuously throughout the ASM with your logo printed on the program.

Inclusions

- Logo displayed on the front and back of the Pocket Program

NAME BADGES \$2,200

Each delegate will be issued a name badge printed with your logo. Your logo will be visible on every delegate at the ASM and be seen whenever a delegate looks at a name badge.

Inclusions

- Company logo printed on all delegate name badges

ASM HANDBOOK ADVERTISEMENT \$1,100

Market your company and/or product with a full A4 page advertisement in the conference handbook.

Inclusions

- 1 A4 page Advertisement in ASM Handbook

SATCHEL INSERTS \$1,100

Market your company and/or product with a flyer inserted in the delegate satchels.

Inclusions

- 1 insert up to A4 size brochure (company to provide insert)

EXHIBITION

STANDARD BOOTH \$5,900

PREMIUM BOOTH \$7,900

Exhibitors can mingle with conference delegates during morning tea, lunch and afternoon tea breaks as meals are served in a centralised networking area. As an exhibitor, your organisation will receive a high level of exposure and recognition through the following entitlements.

Inclusions*

- One Exhibition booth
- Delegate list
- Acknowledgement of company participation on all ASM print and web materials
- Logo displayed on conference website
- One complimentary registration including social functions (Welcome Cocktails & Gala Dinner)
- Morning tea, afternoon tea and lunch will be served in the exhibition area to maximise exposure to delegates

*Inclusions do not double up for a double booth, they are the same for both single and double booths

Standard Exhibition Booth includes:

Standard Booth Size 2m (L) x 2m (D) 2.4m (H)

- 1 x trestle table
- 1 x Standard chair
- 1 x Company Name on Fascia Board (Max 25 characters)
- 2 x 150w spotlights
- 1 x 4amp power board (4 outlets)

Premium Exhibition Booth includes:

Premium Booth Size 3m (L) x 2m(D) 2.4m (H)

- 1 x trestle table
- 2 x Standard chairs
- 1 x Company Name on Fascia Board (Max 25 characters)
- 2 x 150w spotlights
- 1 x 4amp power board (4 outlets)

Custom Stands

Exhibitors wishing to arrange for the construction of custom-built stands **must advise the Conference Organiser** and supply full details of the stand design and chosen contractor.

EXHIBITION

EXHIBITOR'S INFORMATION

Please check the 'Sponsors & Exhibitors' section on the website for important details, including:

- List of confirmed exhibitors
- Current booth allocations and floor plans
- Bump-in times
- Bump-out times
- Delivery Instructions
- Registration Forms
- Contact details of exhibition equipment supplier
- Deadlines for supply of logos, company profiles and advertising material

ALLOCATION OF SPONSORSHIP PACKAGES AND EXHIBITION SITES

Sponsorship packages will be allocated on receipt of a signed booking form and deposit payment. The Committee will allocate site positions after taking into account each organisation's sponsorship, the date of booking, preferences, proximity to competitors and other relevant matters. The Committee reserves the right to alter the Exhibition Floor Plan at any time.

EXHIBITOR SIGNAGE

All signage prices other than standard fascia signs would be based on size, style and quantity requirements quoted by the supplier, and are to be paid by the exhibitor.

EXHIBITION/SPONSORSHIP APPLICATION

Applications for exhibition/sponsorship participation can be made on the enclosed form. Upon receipt of your registration form, a tax invoice will be forwarded confirming your participation. All space is allocated on a first in first served basis with preference to Diamond, Platinum, Gold and Silver Partners.

EXHIBITION

FURNITURE & UPGRADES

Our suppliers are able to offer a full support service to all exhibitors requiring furniture, flooring, signage, AV, upgrade stands, custom stands or prop hire. Please contact Fusion Displays to discuss your needs.

E: sales@fusiondisplays.com

P: +61 8 8947 1990

W: www.fusiondisplays.com.au

CATERING

All catering will be held amongst the trade/exhibition display areas. The organisers will work with the catering company to ensure all positions receive the best possible exposure with delegates. All exhibitors will be catered for 30 minutes prior to the scheduled catering breaks.

INTERNET ACCESS

Wi-Fi internet will be available in the conference areas for conference delegates and exhibitors.

REGISTRATION AND ACCOMMODATION

All attending company representatives must be registered for the meeting, including complimentary registrations. Group discounted rates have been negotiated with the Ayers Rock Resort. You must book your accommodation through the accommodation booking website to receive the discounted rate.

CONDITIONS

- All costs are in AUD including GST
- Finished art is to be supplied for all advertisements as a pdf
- All additional signage should be pop-up banners unless confirmed with the conference organiser
- Satchel inserts must be approved by the conference organiser
- Each company representative attending the ASM must pre-register
- The delegate list will be supplied in hardcopy at the time of the ASM

EXHIBITION FLOOR PLAN

EXHIBITION FLOOR PLAN

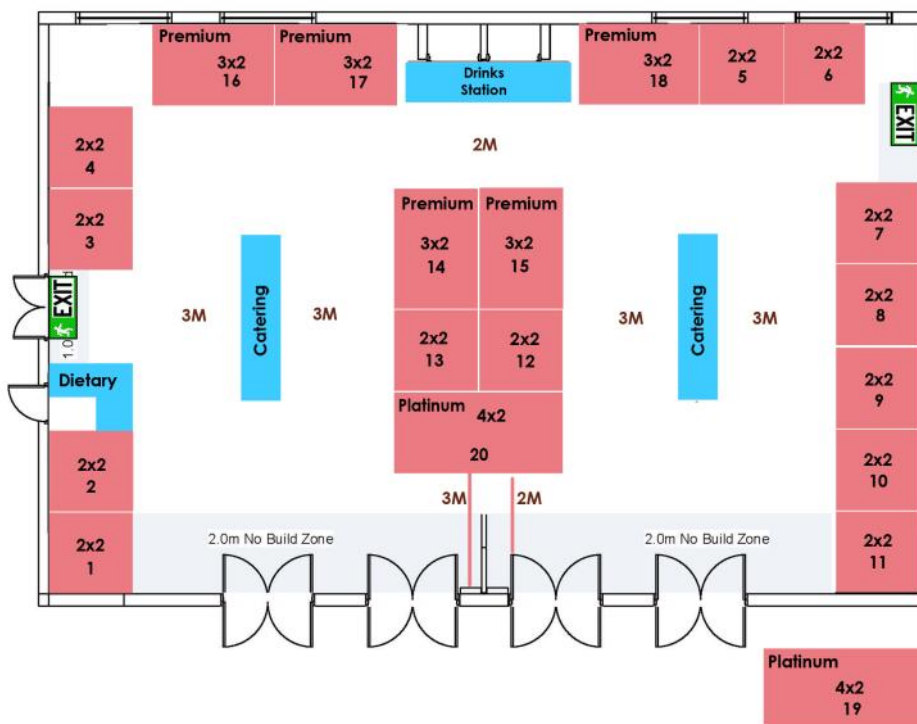
Note

- The Committee will allocate site positions after taking into account each organisation’s sponsorship, the date of booking, preferences, proximity to competitors and other relevant matters.
- The Committee reserves the right to alter the Exhibition Floor Plan at any time.
- Catering will be provided for all delegates and exhibitors in the exhibition area.

Standard Booths	01 - 13	2m x 2m
Premium Booths	14 - 18	3m x 2m
Platinum Booths	19 & 20	4m x 2m (for platinum sponsors only)

WANARI ROOMS 1 & 2

Phlebology Conference



↓ ↓
Doors to foyer and plenary room

REGISTRATION FORM

The registration form is on the following page.

All sponsorship and exhibition bookings are to be received by 31 January 2016.

Bookings will not be confirmed until the completed registration form has been returned to the College with a 50% deposit of the total amount due by the 29 February 2016. The remainder of the total amount due is payable by the 31 March 2016.

If you need to discuss allocations and any other requirements please do not hesitate to contact the College office by phone on +612 9386 1811 or by email on acpasm@phlebology.com.au

**ACP 18TH ANNUAL SCIENTIFIC MEETING 2016
SPONSORSHIP AND EXHIBITION BOOKING FORM**

CONTACT NAME:	COMPANY:	
ADDRESS:		
SUBURB:	STATE:	POSTCODE:
BUSINESS PHONE:	MOBILE PHONE:	
EMAIL:		

EXHIBITION

Number of booths/sites required: _____

Preference 1: _____

Preference 2: _____

Not located next to: _____

What do you require?	Booth structure	Site only for custom display
----------------------	-----------------	------------------------------

Wording for fascia board (max 30 characters) _____

For planning purposes, give a brief description of any large, high or unusual equipment you will be displaying in your booth.

SPONSORSHIP

Sponsorship Option: _____

Comments: _____

PAYMENT SUMMARY

Exhibition Total _____

Sponsorship Total _____

TOTAL PAYMENT DUE _____

PAYMENT TERMS

A payment of 50% of the total payment due must accompany your completed booking form to confirm your booking. The balance is to be paid by the 29 February 2016

CANCELLATION POLICY

A cancellation fee of 50% will be applicable for any sponsorship or exhibition booking cancelled up to 3 months prior to the ASM. No refund will apply after this date.

AUTHORISATION

Name _____

Date _____

Signature _____

PAYMENT DETAILS

Cheque EFT Transfer Credit Card Visa MasterCard Amex*

 3 digit CSV (located on back of card)

Card Holder's Signature _____ Amount: \$ _____

Card Holder's Name _____ Card Expiry Date _____

*Amex incurs a 3% surcharge

For EFT transfers: The Australasian College of Phlebology Incorporated BSB 062 808 ACCOUNT NUMBER 10050340 SWIFT CTBAU2S

Cheques to be made payable to: The Australasian College of Phlebology



CONTACT

Zivka Nicholls
Conference Manager

Sepand Asadolahi
Conference Co-ordinator

+61 2 9386 1811
acpasm@phlebology.com.au

